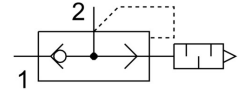


Quick exhaust valve SEU-1/8-NPT

Part number: 9798

FESTO



Data sheet

| Feature | Value |
|---|--|
| Type code | SEU |
| Valve function | Quick exhaust |
| Selection of additional function | With pneumatic muffler |
| Pneumatic connection 1 | 1/8 NPT |
| Pneumatic connection 2 | 1/8 NPT |
| Type of mounting | Screw-in |
| Standard nominal flow rate exhaust air 6→5 bar | 390 l/min |
| Standard flow rate exhaust 6→0 bar | 1000 l/min |
| Standard nominal flow rate pressurization 6→5 bar | 300 l/min |
| Operating pressure | 0.5 bar ... 10 bar |
| Ambient temperature | -20 °C ... 75 °C |
| Operating medium | Compressed air as per ISO 8573-1:2010 [7:-:-] |
| Nominal width | 5 mm |
| Symbol | 00991460 |
| Information on operating and pilot media | Operation with oil lubrication possible (required for further use) |
| Temperature of medium | -20 °C ... 75 °C |
| Noise level | 86 dB(A) |